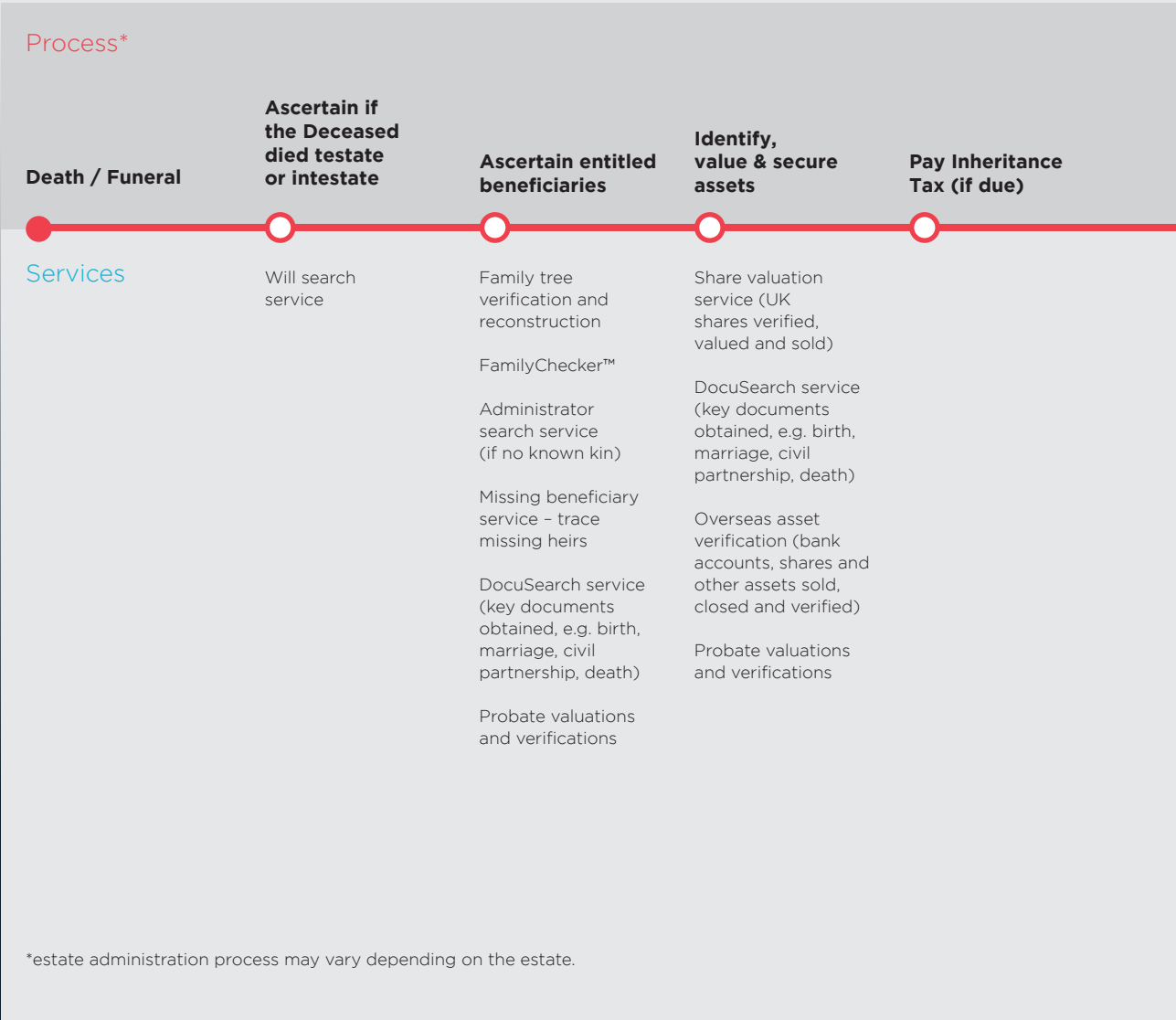




Title
Research

Turn to Title Research

With a range of expert services that span the entire estate administration process, our seamless, professional assistance will ensure you more than meet your clients' needs.



Apply for and receive Grant of Representation or reseal Grant (if needed)

Overseas Grants of Probate service (Grants resealed around the world)

DocuSearch service (key documents obtained, e.g. birth, marriage, civil partnership, death)

Gather in assets (UK & overseas)

Overseas assets service

Repatriation of bank account funds

Verification and repatriation of shares and other assets

Grants resealed around the world

Obtaining tax clearance to deal with US assets (Federal Transfer Certificate)

Reclaiming funds passed to the State (escheatment)

DocuSearch service (key documents obtained, e.g. birth, marriage, civil partnership, death)

Pay any debts

Distribute estate to beneficiaries

Missing beneficiary service – trace missing beneficiaries

Missing Beneficiary Indemnity Insurance

Missing Will Insurance

Family tree verification and reconstruction

Overseas bankruptcy Search Service

Address checker

Post-process

Dormant and orphan balances

For further details on any of our services, please call us on **+44 (0) 345 87 27 600**.

Ensuring accuracy, eliminating risk

At Title Research, we provide trusted genealogical research and asset repatriation services for legal professionals.

Everything we do is designed to streamline estate administration, to take the effort out of locating the correct people or assets, and to mitigate against the risk of future dispute or complications.

We can help you at every stage of your clients' estate administration process.

We bring clarity to estate administration

Our commitment to clarity runs through everything we do at Title Research and helps us provide you with the best possible service. While the areas in which we operate may be complex, our fees are transparent, our processes straightforward and our reporting unambiguous.

The expertise and experience we've gained over five decades means that we know where to find the people you need to trace and how to navigate even the most complex international processes. We believe it's our task to remove uncertainty so that you can complete your job with confidence.

Above all, we take pride in our work by providing an effective, comprehensive service that our clients can count on. Turn to us when you're looking for help with the estate you're handling.



Quick response
time



Proven
solution



Trusted & ethical
processes



Fixed fee
solutions available



Over 50 years'
experience



International
reach

We're proud to be experienced people tracing and asset repatriation specialists, with an expert team who can help you meet any estate administration challenge.

Proven Solution

We successfully locate
over 4,000 missing
beneficiaries annually.

Tracing missing or unknown people

Tracing missing beneficiaries or other missing people can often be a time-consuming task. Allow us to take responsibility for this and free up your time for other work. We understand the often complex nature of family relationships – when people lose touch or divisions occur. We also understand that finding a missing family member can be time critical and know just where to look and focus our efforts.

Recent examples of our work include tracing a missing trustee for a solicitor client, locating the beneficiary in Spain – who was ultimately found living in a cave, and tracking down the whereabouts of a legatee in the UK, which we completed within five days of instruction.

We are committed to successfully completing every case we undertake and in the unlikely event that we can't trace a missing person, we will always provide you with a solution to the problem.

We offer a fixed fee pricing structure in many cases for locating missing heirs, either in the UK or overseas. You and your clients can rely on our years of expertise and experience to find a solution, quickly. The final distribution value will be maximised for the beneficiaries as no additional fees will be added.



Your reassurance against risk

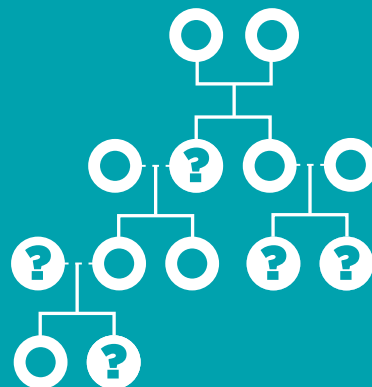
With our excellent success rate for locating missing heirs, Title Research will assist you in the distribution of an estate and mitigate risk against future disputes. However, we also go that extra mile to ensure Personal Representatives have peace of mind should a known or unknown heir come forward after the date of distribution.

Missing beneficiary insurance and 'comfort' policies were created to provide cover for Personal Representatives should a known or unknown missing beneficiary come forward after the date of distribution. In the unlikely event of this happening, missing beneficiary insurance, provided by our specialist insurance partners, will ensure you always have a solution.

In most circumstances, the insurer will require a genealogy report before the policy can be underwritten, which we can provide. Our research methodologies, developed over 50 years, are accepted by specialist insurers and all research is conducted with insurance in mind.

We can also advise when insurance cover will typically be more expensive when indemnifying against a close relative of the Deceased.

Missing Beneficiary Indemnity Insurance provides extra cover after the estate has been distributed.



Family tree reconstruction

This option is usually required in the case of an intestacy, partial intestacy or when insurance is to be obtained on an estate (see the previous page). In-line with our open and transparent approach, we can offer fixed fees where appropriate or work on traditional time and expenses, providing choice and flexibility to you and your client.

We are often presented with incomplete, misleading or, in some cases, no information whatsoever. This can lead to an increased chance of a future claim on the estate. We will work from the family trees supplied by your client, or start from scratch if required. We can research every branch on your behalf and contact everyone we find so that you don't have to.

Recent examples include the reconstruction of a family tree where the Deceased was born in the Philippines – identifying 76 potential heirs, most of whom still resided in the Philippines. In an intestate estate, our client believed the closest living family member was a cousin. We established a surviving nephew and niece, saving our client from potential misdistribution.

Our proven process documents all events of birth, marriage, death, divorce and adoption. We meticulously descend each family line to identify all the entitled beneficiaries (or to prove where entitlement ends) and then formally contact and verify the identity of the beneficiaries we find. Our diligence is your reassurance.

**We meticulously descend
each family line and
investigate all of the
entitled heirs.**

FamilyChecker™

We always recommend that family trees are professionally verified to ensure that all entitled people are included, and unentitled people are excluded. This protects Personal Representatives from any potential future liability due to unknown beneficiaries.

- **Are you certain that the child adopted in was legally adopted in?**
- **Did the cousin who predeceased have children with his first wife?**
- **You're aware that an uncle has died, however, are you confident he didn't get married?**
- **Was the Deceased's mother definitely an only child?**

Our FamilyChecker™ service is designed to provide this peace of mind. If you provide us with a family tree that is believed to be complete, our experienced genealogy team will check it for accuracy by:

- Documenting any events of birth, marriage, death or adoption that have not already been obtained
- Carrying out confirmatory searches of the birth and marriage indices to make sure that the family tree is correct
- Interviewing all potential heirs to make sure that all information is correct

This protects Personal Representatives from any potential future liability. If the family tree is found to be accurate we can provide an insurance policy, underwritten by A-rated insurers, to protect the Personal Representatives from any potential future claims. This service is provided for an inclusive fixed price.



Research for a Statutory Will

Our specialist team can help with Statutory Will matters where the Court of Protection has ruled that a person lacks capacity and is unable to make their own Will. Creating a Statutory Will is often in the best interest of the person involved as it will prevent the estate from being distributed as if an intestacy.

We can recreate the family tree from very limited initial information – usually, we can do this even if all you have is the person's birth certificate. We apply the relevant rules of intestacy for your jurisdiction and meticulously descend each family line to identify all of the potentially entitled kin (or to prove a negative). We will then formally contact each and every relevant family member and confirm their identity, regardless of where they reside.

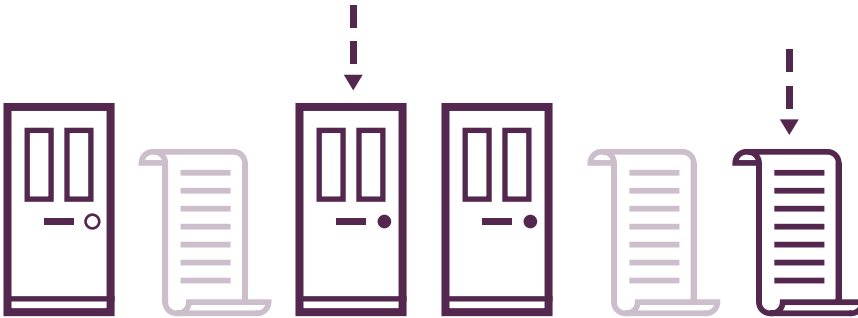
Recently, we assisted a solicitor who needed to serve notice on all of a person's next of kin that they were writing a Statutory Will for. We identified the relevant people and our client was able to put a Will in place, successfully naming charities that the person had supported throughout her life.

We can reconstruct the family tree and locate those materially affected by the Statutory Will.

Administrator searches

Designed for solicitors who become aware of a death where no Will has been left and there are no known next of kin. We'll search for and locate a relative who is willing and able to act as the Personal Representative, giving you the opportunity to then administer the estate. Once appointed, we can then extend our service to a full reconstruction of the family tree on your behalf. If your services are not required by the Personal Representative we find, you will not be charged by us.

95% of the Administrators we locate go on to instruct our client.



Locating Wills and addresses

With 50 years' experience of searching for the critical pieces of information that legal professionals need to administer an estate, we know where to find missing details. Turn to us for quick, cost-effective services such as:

Will search

We take a multi-disciplined approach to establishing whether a Will has been left and if so, to confirm its location. When you commission us to carry out this vital service, we will:

- Search the Certainty National Will Register
- Place a notification on the Certainty Missing Wills Register
- Contact solicitors in the area where the Deceased lived (using the Certainty Will search service)

If no Will is found we can provide you with total peace of mind for you and your client with a no obligation quotation for Missing Will Insurance.

Address checker

If you hold details of an address but have doubts over its validity, our address checker service provides a fast, efficient and cost-effective solution. We will provide a report on our findings and can offer solutions should the person no longer be known at that address.



Dormant & orphan balances

The Solicitors Regulation Authority (SRA) expects legal professionals to take all necessary steps to return unclaimed client funds. If the client cannot be found, solicitors need to provide evidence which shows they have tried to trace the client. We can help in both instances.

The Law Society recommends the use of a tracing agent as one of the steps you can take to locate missing clients. Our excellent service includes locating a current UK address, identifying any forwarding addresses and establishing if a client has passed away.

If we can't find a likely forwarding address or a likely death for your client, our report will indicate this so that you can make alternative arrangements in accordance with your firm's own policies.

Our fee would be a fixed price per missing client we search for. We never charge a percentage of the sum held on account and believe that every client should receive the maximum amount possible.

**We'll take the necessary steps
to find former clients and return
their funds on your behalf.**

UK fast track share sales

Many estates are formed in part by shareholdings, and selling these quickly and efficiently can be an effective way of releasing funds into the estate in order to settle debts and other expenses. Our solution allows us to remit funds into your client account within nine working days of receipt of the fully completed paperwork from you.

Global bankruptcy searches

If a beneficiary resides outside of England and Wales, it is recommended to check their bankruptcy status before distributing any money to them. This crucial service, which can be conducted in over 60 jurisdictions, will ensure that any debt settlements do not take higher priority when the estate funds are distributed.

Probate valuation

For trusted results, the Title Research team can provide essential, timesaving services to you. These include accurate date of death valuations on shareholdings (probate valuation), or providing added assurance that the shareholding still exists and forms part of the estate (probate valuation and verification).



**Turn to Title Research
when you need to
find, verify and sell
financial assets.**



A vintage map of the world, showing continents and oceans. A magnifying glass is placed over the Atlantic Ocean, specifically over the area labeled 'THE WESTERNE SEA'. The map is aged and has a sepia tone. The magnifying glass has a wooden handle and a metal frame.

Specialist support
for estate administration

Administering overseas assets

When assets such as funds or shares are located overseas, our experience translates into successful transactions. We understand the pitfalls and the processes, with on-the-ground experts to help sell or transfer the necessary assets in the quickest possible time.

If an estate includes assets based in another country, then either a Grant of Probate or a reseal of the existing UK Grant of Probate may be required to deal with them. We can help in both these situations and our longstanding experience means that we can quickly navigate the red tape in any given country.

We can also transfer overseas assets or sell them so that their value can be distributed to the beneficiaries.

Similarly, we frequently close bank accounts in countries around the world and have formed excellent relationships with local officials in areas such as banking. With us as your single point of contact for the whole asset repatriation process, you'll save time and money.

Repatriating overseas assets is one of our core services. And we offer the added peace of mind that comes with the option of fixed fees.



Dealing with North American assets

Let us navigate the often complex process of selling and transferring shareholdings in the United States and Canada for you. With our extensive experience, we will complete all the necessary paperwork, verify the shareholding and transfer or sell the asset, as required.

In cases where a Federal Transfer Certificate is required to obtain tax clearance from the Internal Revenue Service (IRS), we will do the hard work for you, whether this forms part of the share sale process or is required as a standalone service.

We also have extensive experience of different State processes and can help recover 'escheated' assets, helping you maximise the value of the estate for your client and the beneficiaries.

Expedited stock transfers

If you are administering an estate with shares traded on US or Canadian stock exchanges, it's very likely you'll need what is known as a Medallion Signature Guarantee before the shares can be transferred or sold.

Here at Title Research, we can help manage that process for you, ensuring efficient share transfers, and helping you administer your clients' assets much sooner than would otherwise be possible.

Turn to Title Research

Our proven expertise can help you
with any estate administration challenge,
at home or overseas.

Call +44 (0) 345 87 27 600

Email info@titleresearch.com

Web www.titleresearch.com

